

# MUSIC – VOCAL

**DATUM: 11-14 AUGUST 2025**

Head of Division:            Elet Kruger            072 910 8484  
<mailto:eletkruger@gmail.com>

---

**Please read the general rules, as well as the specific rules.**  
**To avoid disqualification, please make sure you enter into**  
**the correct category!**

**Payment with entering of participants ensures placement**  
**in the program**

## ENTRY FEES

Solo	R130-00
Duet	R80-00 pp
Trio	R80-00 pp
Quartet	R80-00 pp
Group 5-10	R65-00 pp
Competitive solo items	R250-00 pp
Competitive group items	R85-00 pp

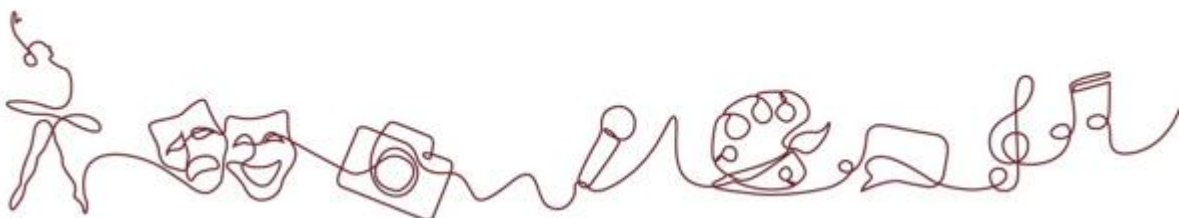
## **General Information**

A trophy will be given to the most versatile Primary and High school performer. The winner will be chosen based on the **amount** and **variation** of items entered by the performer as well as the quality of the performance. The winners will be invited to receive their trophy at the Gala Evening.



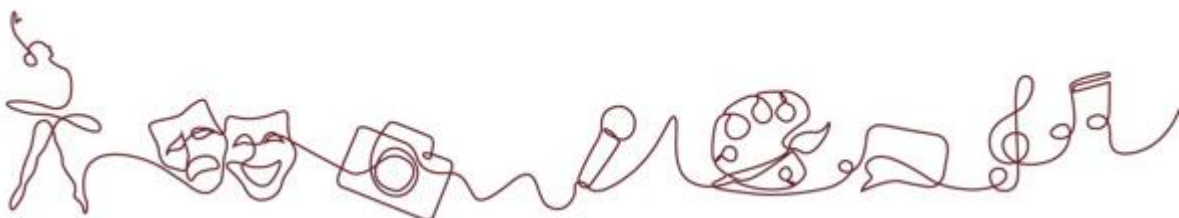
## General Rules

- Each item on the program will be given 3-5minutes (depending on the item). This allows for setting up and the performance itself. Each performance should be kept between **1-4minutes** unless otherwise indicated.
- No participant will be allowed to perform more than once in an **item**.
- The same **song/piece** may not be presented in **more than once** section.
- The use of a microphone in the light music section is compulsory (irrespective of age) as candidates are adjudicated on microphone technique.
- All works presented must be **memorized**.
- Movement and choreography is encouraged in the light music section.
- Please ensure that pieces entered as “Own Composition” are indeed, original. Where a poem is set to music, the poet’s name must be indicated at registration. Participants found guilty of plagiarism will be disqualified.
- When singing in a language other than English, please provide the adjudicator with **a translation** upon registration.
- Please ensure that you enter for the **correct category** and item to avoid disqualification. Please note: **MVC – CLASSICAL MUSIC, MVL – LIGHT MUSIC.**



## **INFORMATION COMPATIBLE ELECTRONIC DEVICES:**

- **USB flash** drives containing backtracks will be accepted.
- Please ensure that **ONLY** the song/songs that the participant will be performing are on the device.
- The participant's name should be **clearly marked** on the outside of the device. The **date and item** on the device should also be clearly indicated. Example: 5 August 2025 MVL 22.
- The flash drive must be handed to the sound engineer **30 minutes prior to the start of a section, or just after registration.**
- The sound engineer will **not be responsible** for returning flash drives, so please make sure that they are collected at the end of the section.
- Backtracks may not contain any vocals. Pre-recorded voices, enhancing the melody line of the voice, are not allowed.



---

## CLASSICAL MUSIC SECTION

---

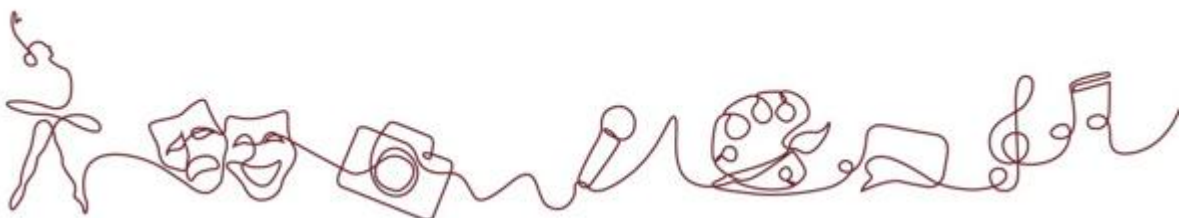
Definition:

Classical music (small 'c') is Western instrumental, orchestral, vocal and choral music – created for both secular and sacred settings. It refers to serious music following long-established principles rather than a folk, jazz or popular tradition. It is further classified into the Medieval (500-1400), Renaissance (1400-1600), Baroque (1600-1750), Classical (1750-1820), Romantic (1800-1910), Modernist (1890-1975) and Postmodern/Contemporary (1950-present) eras.

Singing of classical music refers to vocal music in the style of the classical composers and involve, lieder/Art songs (poetry set to music e.g. by English, French, German, Italian and South-African composers), opera, operetta, oratorio and secular music.

### Specific Rules

- Microphones will only be allowed in the non-competitive section and must only be used with a backtrack.
- Acoustic accompaniment may be used. Affiliates will be provided with a list of accompanists in and around Nelspruit. Please note, this will be at the expense of the participant.
- *A Capella* singing is also allowed.
- Please make sure of the item number before entering.
- Any language is allowed. Please hand in a translation of the text in English at registration.
- Please indicate the composer and arranger of the piece.
  
- **NB! A copy of the sheet music must be handed in at registration.**

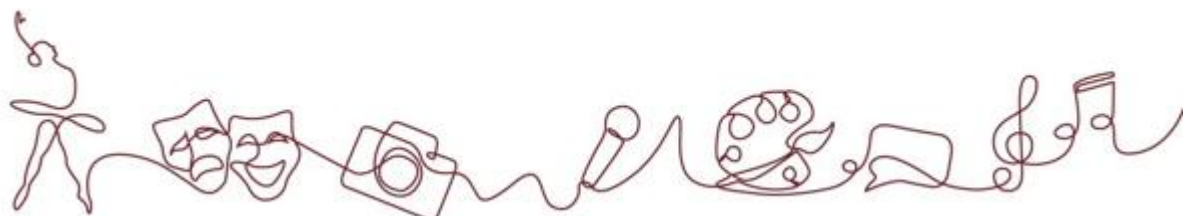


## **PARTICIPANTS WILL BE ASSESSED BY THE FOLLOWING CRITERIA:**

- Intonation
- Diction
- Voice projection
- Interpretation
- Musicality

## **SOLOS (ANY LANGUAGE): NON COMPETITIVE**

ITEM MVC 1	FREE CHOICE WITH ACCOMPANIMENT
ITEM MVC 2	FREE CHOICE A CAPELLA
ITEM MVC 3	FREE CHOICE WITH BACKTRACK
ITEM MVC 4	ART SONG/LIEDER WITH ACCOMPANIMENT
ITEM MVC 5	ART SONG/LIEDER A CAPELLA
ITEM MVC 6	ART SONG/LIEDER WITH BACKTRACK
ITEM MVC 7	OPERA WITH ACCOMPANIMENT
ITEM MVC 8	OPERA A CAPELLA
ITEM MVC 9	OPERA WITH BACKTRACK
ITEM MVC 10	OPERETTA WITH ACCOMPANIMENT
ITEM MVC 11	OPERETTA A CAPELLA
ITEM MVC 12	OPERETTA WITH BACKTRACK
ITEM MVC 13	TRADITIONAL WITH ACCOMPANIMENT
ITEM MVC 14	TRADITIONAL A CAPELLA
ITEM MVC 15	TRADITIONAL WITH BACKTRACK



## **ENSEMBLES: NON COMPETITIVE**

Own choice of any genre mentioned above. (MVC1-MVC15)

- |             |                    |
|-------------|--------------------|
| ITEM MVC 16 | DUET               |
| ITEM MVC 17 | TRIO               |
| ITEM MVC 18 | QUARTET            |
| ITEM MVC 19 | GROUP 5-10 MEMBERS |
| ITEM MVC 20 | FAMILY ITEM        |



---

# CLASSICAL MUSIC PROGRAM SECTION: COMPETITIVE

---

## Specific Rules

- No work presented in any other items may be performed in this section.
- A Program **must** consist of **2 contrasting** pieces of differing styles for primary school and a **balanced concert program of 3 pieces** for secondary pupils as well as Open Men/Woman
- An age appropriate repertoire is strongly encouraged.
- Performers must be dressed appropriately.
- NO backtracks or microphones allowed in this section.

ITEM MVC 21	PRIMARY SCHOOL BOYS (2 songs)
ITEM MVC 22	PRIMARY SCHOOL GRILS (2 songs)
ITEM MVC 23	SECONDARY SCHOOL BOYS (3 songs)
ITEM MVC 24	SECONDARY SCHOOL GIRLS (3 songs)
ITEM MVC 25	OPEN – MEN (3 songs)
ITEM MVC 26	OPEN – WOMEN (3 songs)



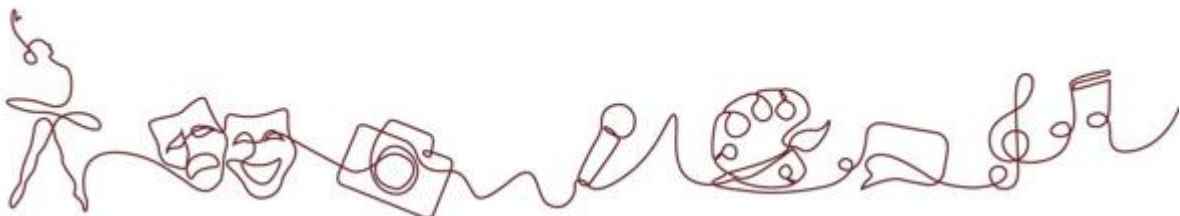
---

## LCMA PRIZE

---

- The winners of the following items will also receive a prize sponsored by the Lowveld Chamber Music Association. The award will be given to the best participant achieving a minimum of 85%.

ITEM MVC 27    SECONDARY SCHOOL BOYS  
ITEM MVC 28    SECONDARY SCHOOL GIRLS





---

# LIGHT MUSIC SECTION: NON-COMPETITIVE

---

## Specific Rules

- Time allocation per item is **1-4 minutes**, unless otherwise indicated.
- Backtrack or acoustic accompaniment may be used in this section.
- Backtracks may not include vocals.
- A Capella singing is allowed.
- Pupils accompanying themselves will be judged on their performance as a whole, meaning both the singing and the instrumental will be judged.
- Items **MVL 44,45 & 46 will be allowed 5min.**

## **SOLOS (ANY LANGUAGE): NON COMPETITIVE**

ITEM MVL 29	GOSPEL WITH ACCOMPANIMENT
ITEM MVL 30	GOSPEL CHOICE A CAPELLA
ITEM MVL 31	GOSPEL CHOICE WITH BACKTRACK
ITEM MVL 32	POP WITH ACCOMPANIMENT
ITEM MVL 33	POP CHOICE A CAPELLA
ITEM MVL 34	POP CHOICE WITH BACKTRACK
ITEM MVL 35	COUNTRY WITH ACCOMPANIMENT
ITEM MVL 36	COUNTRY CHOICE A CAPELLA
ITEM MVL 37	COUNTRY CHOICE WITH BACKTRACK
ITEM MVL 38	ALTERNATIVE/ROCK WITH ACCOMPANIMENT
ITEM MVL 39	ALTERNATIVE/ROCK A CAPELLA
ITEM MVL 40	ALTERNATIVE/ROCK WITH BACKTRACK
ITEM MVL 41	JAZZ/BIG BAND/SWING WITH ACCOMPANIMENT



- 
- |             |   |
|-------------|---|
| ITEM MVL 42 | JAZZ/BIG BAND/SWING A CAPELLA                               |
| ITEM MVL 43 | JAZZ/BIG BAND/SWING WITH BACKTRACK                          |
| ITEM MVL 44 | BROADWAY/CABERET/MUSICALS & MOVIE THEMES WITH ACCOMPANIMENT |
| ITEM MVL 45 | BROADWAY/CABERET/MUSICALS & MOVIE THEMES A CAPELLA          |
| ITEM MVL 46 | BROADWAY/CABERET/MUSICALS & MOVIE THEMES WITH BACKTRACK     |
| ITEM MVL 47 | OWN CHOICE WITH ACCOMPANIMENT                               |
| ITEM MVL 48 | OWN CHOICE A CAPELLA  |
| ITEM MVL 49 | OWN CHOICE WITH BACKTRACK                                   |



## **ENSEMBLE: NON COMPETITIVE**

**THIS SECTION INCLUDES REVUES, CHORUS LINE SONGS, MEDLEYS AS WELL AS SONGS WITH MOVEMENT. MAXIMUM TIME ALLOTTED IS 5 MINUTES. ITEMS MUST BE ENTERED UNDER THE AGE OF THE OLDEST PARTICIPANT.**

**PARTICIPANTS WILL BE ASSESSED BY THE FOLLOWING CRITERIA:**

- HARMONIZATION
- INTONATION
- INTERACTION
- SONG CHOICE

ITEM MVL 50	DUET (2 Singers)
ITEM MVL 51	TRIO (3 Singers)
ITEM MVL 52	QUARTED (4 Singers)
ITEM MVL 53	GROUP (5-10 Members)
ITEM MVL 54	FAMILY ITEM



---

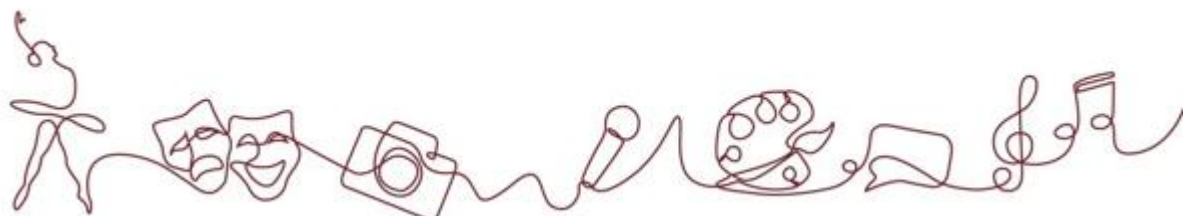
# LIGHT MUSIC SECTION: COMPETITIVE

---

## Specific Rules

- One entry per participant/group
- **Two** contrasting songs of different tempo and character must be presented.
- Songs **MUST** be performed with one song sang with **backtrack** plus one song with **acoustic accompaniment** or **A Capella**. (see CD/Flash drive information)
- Time allocation for the program is **8 minutes**.
- **Anyone performing solely with backtracks will be disqualified!**

ITEM MVL 55	PRIMARY SCHOOL BOYS
ITEM MVL 56	PRIMARY SCHOOL GIRLS
ITEM MVL 57	SECONDARY SCHOOL BOYS
ITEM MVL 58	SECONDARY SCHOOL GIRLS
ITEM MVL 59	OPEN – MEN
ITEM MVL 60	OPEN – WOMEN



## ENSEMBLE: COMPETITIVE

An award will be given to the best participants/group achieving a minimum of **85%** in the following categories:

**PRIMARY SCHOOL: MVL 61&62 and MVL 63&64**

**SECONDARY SCHOOL: MVL 65&66 and MVL 67&68**

ITEM MVL 61	PRIMARY SCHOOL DUET
ITEM MVL 62	PRIMARY SCHOOL TRIO
ITEM MVL 63	PRIMARY SCHOOL QUARTED
ITEM MVL 64	PRIMARY SCHOOL GROUP (5-10 MEMBERS)
ITEM MVL 65	SECONDARY SCHOOL DUET
ITEM MVL 66	SECONDARY SCHOOL TRIO
ITEM MVL 67	SECONDARY SCHOOL QUARTED
ITEM MVL 68	SECONDARY SCHOOL GROUP (5-10 MEMBERS)

## OWN COMPOSITION SOLO: COMPETITIVE

- Only one entry per participant
- Music and lyrics must be handed in at registration.
- An award will be given to the best participants achieving a minimum of **85%** in the following categories:  
Primary, Secondary and Open Items.

ITEM MVL 69	PRIMARY SCHOOL BOYS
ITEM MVL 70	PRIMARY SCHOOL GRILS
ITEM MVL 71	SECONDARY SCHOOL BOYS
ITEM MVL 72	SECONDARY SCHOOL GIRLS
ITEM MVL 73	OPEN – MEN
ITEM MVL 74	OPEN – WOMEN

